

UNIVERSITY OF NORTH TEXAS HEALTH SCIENCE CENTER (763)
Statement of Revenues, Expenses and Changes in Net Assets - Actual Revenues
For the Fiscal Years Ending August 31, 2005 thru 2009

	<u>2009</u>	<u>2008</u>	<u>2007</u>	<u>2006</u>	<u>2005</u>
OPERATING REVENUES					
Sales of Goods and Services:					
Tuition and Fees - Non-Pledged	11,910,347.43	10,621,465.63	9,976,046.06	8,151,409.06	6,870,316.90
Tuition and Fees - Pledged	-	-	-	-	544,612.50
Discounts and Allowances	(131,085.00)	(361,255.84)	(238,102.00)	(278,622.44)	(166,129.05)
Professional Fees - Non-Pledged	84,963,888.59	79,625,226.54	74,249,456.13	62,625,789.95	29,897,496.65
Discounts and Allowances	-	-	(67,496.00)	(200,404.00)	(761,231.46)
Auxiliary Enterprises - Non-Pledged	-	-	-	-	-
Other Sales of Goods and Services - Non-Pledged	3,218,684.26	2,632,460.12	2,154,310.76	2,334,192.22	1,407,256.00
Federal Revenue - Operating	21,726,992.42	20,466,173.75	19,557,088.89	18,807,494.24	18,231,243.39
Federal Pass Through Revenue	202,552.51	168,579.90	30,238.18	66,809.93	133,560.71
State Grant Revenue	745,862.02	95,729.21	56,067.83	99,520.24	69,036.77
State Grant Pass Through Revenue	1,257,741.01	2,342,349.34	1,699,062.75	824,707.52	237,433.62
Other Grants and Contracts - Operating	4,414,406.84	3,348,856.34	3,357,022.55	3,043,253.22	3,019,618.30
Other Operating Revenues	75,957.24	65,607.74	43,057.14	54,932.42	56,144.22
Total Operating Revenues	128,385,347.32	119,005,192.73	110,816,752.29	95,529,082.36	59,539,358.55
NON-OPERATING REVENUES					
Legislative Appropriations (GR)	58,388,382.00	56,385,726.00	48,461,018.00	48,443,713.00	39,542,001.00
Additional Appropriations (GR)	8,960,648.23	8,849,328.92	7,724,658.33	7,336,641.24	6,635,698.41
Gifts	129,925.00	105,500.00	124,855.00	155,108.50	414,254.56
Investment Income	3,237,864.27	4,171,953.73	4,287,379.00	3,693,772.99	3,049,341.59
Total Non-Operating Revenues	70,716,819.50	69,512,508.65	60,597,910.33	59,629,235.73	49,641,295.56
OTHER REVENUES					
Capital Appropriations - HEAF (GR)	7,994,676.00	8,139,391.00	5,426,261.00	5,426,261.00	3,640,000.00
Total Actual Revenues	207,096,842.82	196,657,092.38	176,840,923.62	160,584,579.09	112,820,654.11

UNIVERSITY OF NORTH TEXAS HEALTH SCIENCE CENTER (763)

Statement of Revenues, Expenses and Changes in Net Assets - Actual Operating Expenses

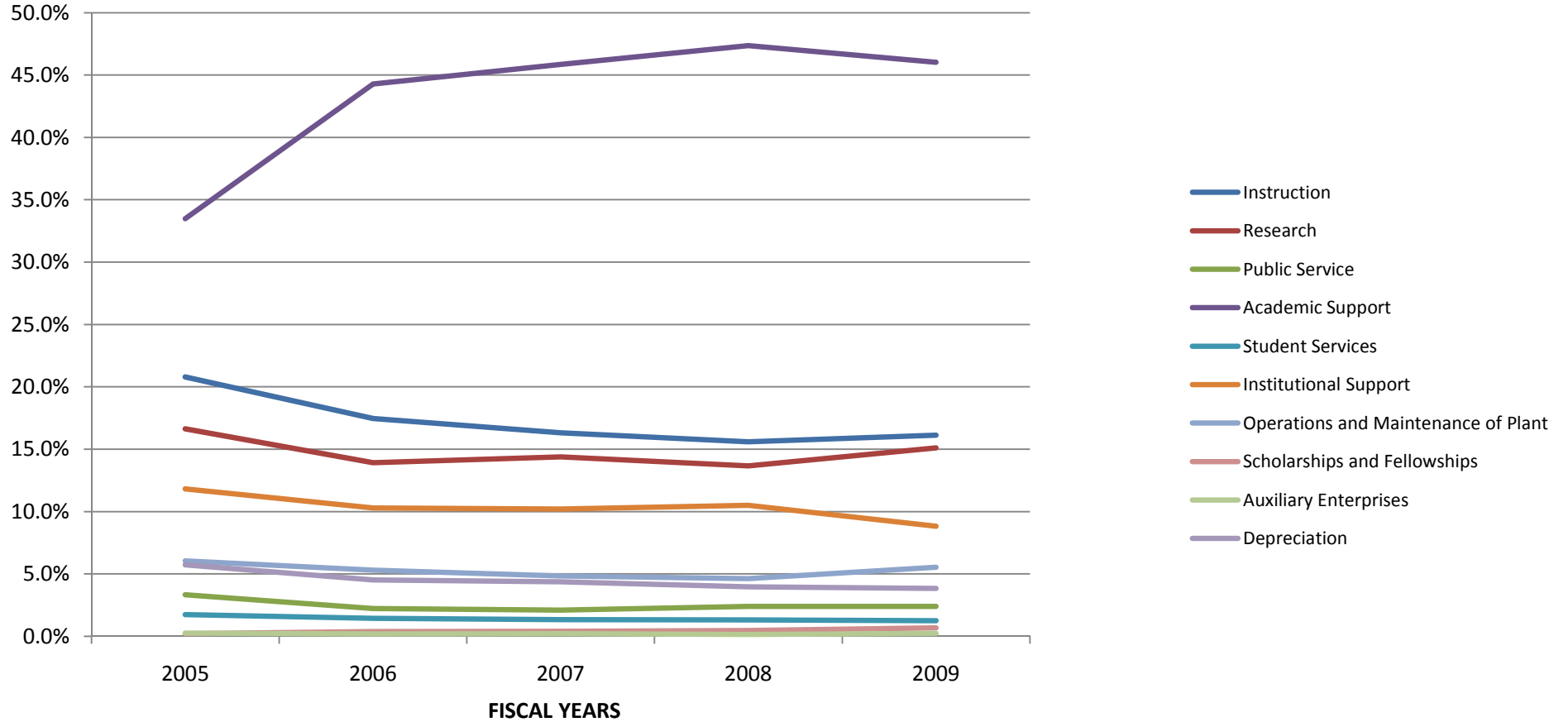
For the Fiscal Years Ending August 31, 2005 thru 2009

	<u>2009</u>	<u>2008</u>	<u>2007</u>	<u>2006</u>	<u>2005</u>
OPERATING EXPENSES					
Instruction	30,179,241.86	28,442,012.49	25,787,993.47	25,850,531.86	22,966,863.07
Research	28,252,632.76	24,939,145.53	22,740,418.09	20,629,365.87	18,366,040.22
Public Service	4,493,300.52	4,365,759.41	3,324,662.03	3,280,080.36	3,674,634.82
Academic Support	86,120,407.22	86,444,786.90	72,466,983.42	65,584,463.91	36,992,582.90
Student Services	2,353,665.57	2,379,271.54	2,100,370.24	2,145,918.27	1,906,340.56
Institutional Support	16,507,551.46	19,167,924.49	16,122,137.75	15,226,167.38	13,063,930.18
Operations and Maintenance of Plant	10,348,107.15	8,426,828.96	7,647,989.62	7,848,417.61	6,669,702.37
Scholarships and Fellowships	1,258,356.96	832,357.25	642,148.73	572,209.21	235,913.17
Auxiliary Enterprises	440,825.92	272,008.30	316,188.95	291,550.74	272,626.72
Depreciation	7,194,549.24	7,221,109.37	6,905,536.76	6,699,533.76	6,316,937.80
Total Operating Expenses	187,148,638.66	182,491,204.24	158,054,429.06	148,128,238.97	110,465,571.81

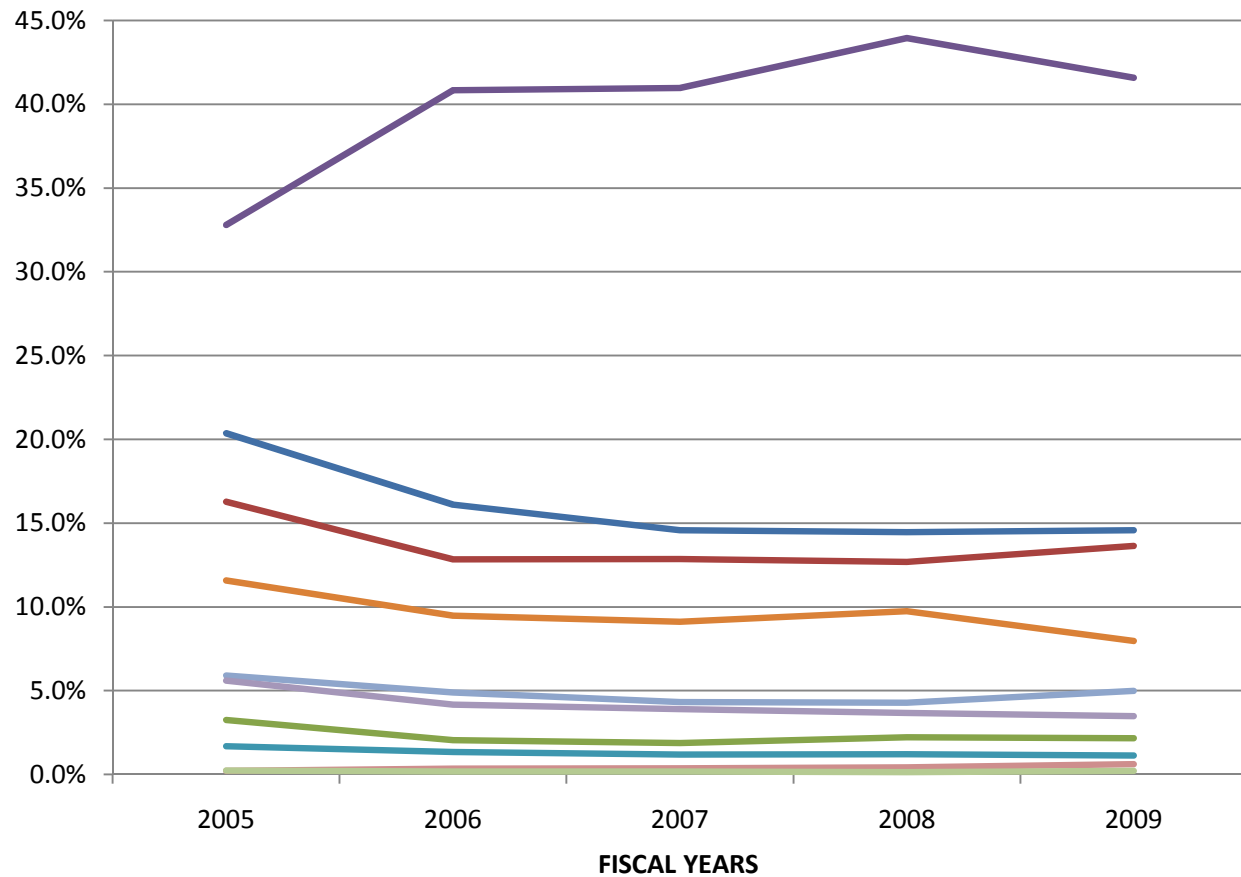
	<u>2009</u>	<u>2008</u>	<u>2007</u>	<u>2006</u>	<u>2005</u>
OPERATING EXPENSES AS % OF TOTAL ACTUAL REVENUES					
Instruction	14.6%	14.5%	14.6%	16.1%	20.4%
Research	13.6%	12.7%	12.9%	12.8%	16.3%
Public Service	2.2%	2.2%	1.9%	2.0%	3.3%
Academic Support	41.6%	44.0%	41.0%	40.8%	32.8%
Student Services	1.1%	1.2%	1.2%	1.3%	1.7%
Institutional Support	8.0%	9.7%	9.1%	9.5%	11.6%
Operations and Maintenance of Plant	5.0%	4.3%	4.3%	4.9%	5.9%
Scholarships and Fellowships	0.6%	0.4%	0.4%	0.4%	0.2%
Auxiliary Enterprises	0.2%	0.1%	0.2%	0.2%	0.2%
Depreciation	3.5%	3.7%	3.9%	4.2%	5.6%
Total Operating Expenses As % Of Total Actual Revenues	90.4%	92.8%	89.4%	92.2%	97.9%

	<u>2009</u>	<u>2008</u>	<u>2007</u>	<u>2006</u>	<u>2005</u>
OPERATING EXPENSE PERCENTAGES					
Instruction	16.1%	15.6%	16.3%	17.5%	20.8%
Research	15.1%	13.7%	14.4%	13.9%	16.6%
Public Service	2.4%	2.4%	2.1%	2.2%	3.3%
Academic Support	46.0%	47.4%	45.8%	44.3%	33.5%
Student Services	1.3%	1.3%	1.3%	1.4%	1.7%
Institutional Support	8.8%	10.5%	10.2%	10.3%	11.8%
Operations and Maintenance of Plant	5.5%	4.6%	4.8%	5.3%	6.0%
Scholarships and Fellowships	0.7%	0.5%	0.4%	0.4%	0.2%
Auxiliary Enterprises	0.2%	0.1%	0.2%	0.2%	0.2%
Depreciation	3.8%	4.0%	4.4%	4.5%	5.7%
Total Operating Expense Percentages	100.0%	100.0%	100.0%	100.0%	100.0%

**UNIVERSITY OF NORTH TEXAS HEALTH SCIENCE CENTER (763)
OPERATING EXPENSES AS A % OF ACTUAL REVENUES**



**UNIVERSITY OF NORTH TEXAS HEALTH SCIENCE CENTER (763)
OPERATING EXPENSES %**



- Instruction
- Research
- Public Service
- Academic Support
- Student Services
- Institutional Support
- Operations and Maintenance of Plant
- Scholarships and Fellowships
- Auxiliary Enterprises
- Depreciation